

## Claimant Count and Vacancies, March 2012

18 April 2012

Buckinghamshire's claimant count fell by 56 in March to stand at 6,631, an increase of 366 over March 2011. At 2.1 per cent of working age residents, Buckinghamshire continues to have the 4<sup>th</sup> lowest claimant count rate of England's 27 county council areas and the 3<sup>rd</sup> lowest rate among the 39 Local Enterprise Partnerships, behind Oxfordshire and Enterprise M3 (both 1.9 per cent). The number of residents out of work for more than six months rose for a third successive month to stand at 2,405, the highest level since May 1997, representing 36.3 per cent of all claimants, while 1,085 residents have been claiming for over a year.

**Table 1: Claimant Count, March 2012**

	No.	%	GB Rank	Annual Change
Aylesbury Vale	2,263	2.0	51 of 380	4.8
Chiltern	1,004	1.8	32 of 380	7.7
South Bucks	660	1.6	19 of 380	7.1
Wycombe	2,704	2.6	112 of 380	5.7
Buckinghamshire	6,631	2.1	4 of 27	5.8
Hertfordshire	19,127	2.7	6 of 39	6.8
Northamptonshire	16,575	3.7	25 of 39	11.1
Oxfordshire	8,020	1.9	1 of 39	2.2
SEMLEP	41,431	3.5	20 of 39	9.1
TV Berkshire	14,247	2.5	4 of 39	2.6
London	237,138	4.4	29 of 39	7.3
South East	150,547	2.8	1 of 12	9.4
Great Britain	1,604,509	4.1	-	9.2

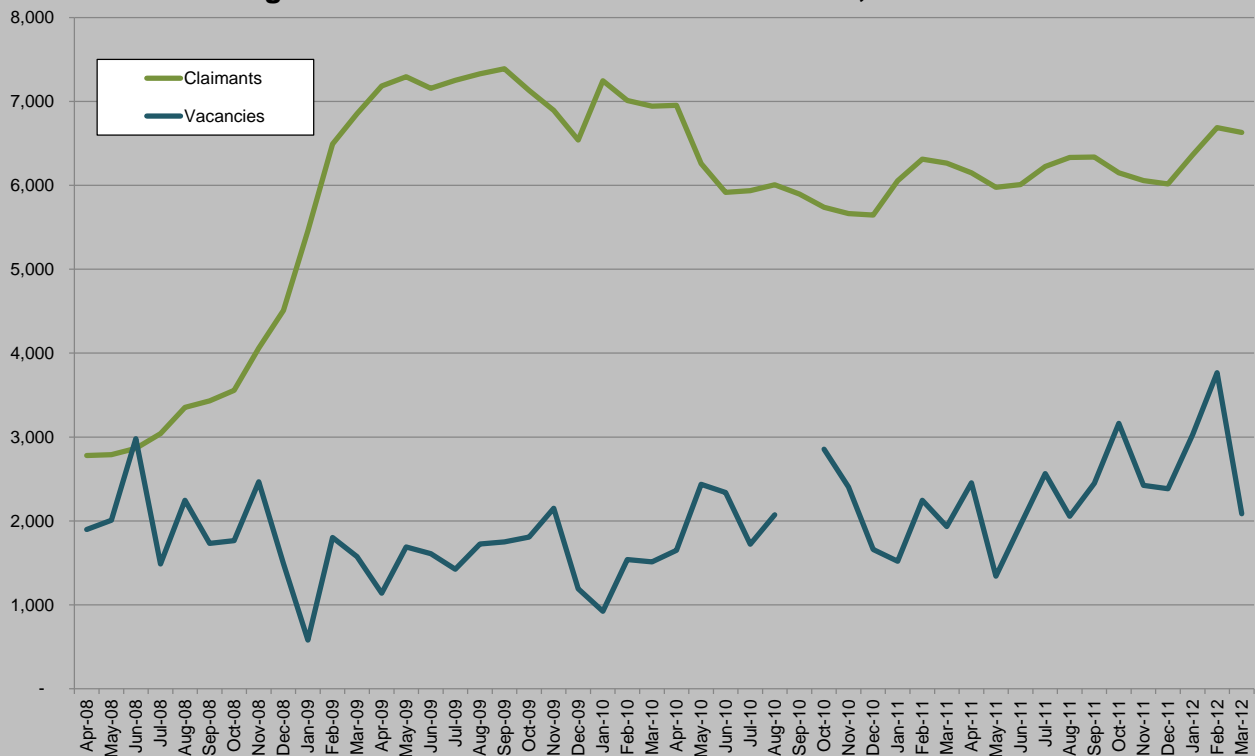
Source: Job Centre Plus, 2012

The claimant count fell in Chiltern, South Bucks and Wycombe but rose for a third successive month in Aylesbury Vale to stand at its highest level since April 2010. By Parliamentary constituency, only Aylesbury saw an increase, rising by 25 to 1,668 or 2.4 per cent of residents, the highest level since September 2009. The largest fall was recorded in Wycombe, however it still has the county's highest claimant count rate at 3.2 per cent, well above the 2.8 per cent recorded across the South East as a whole.

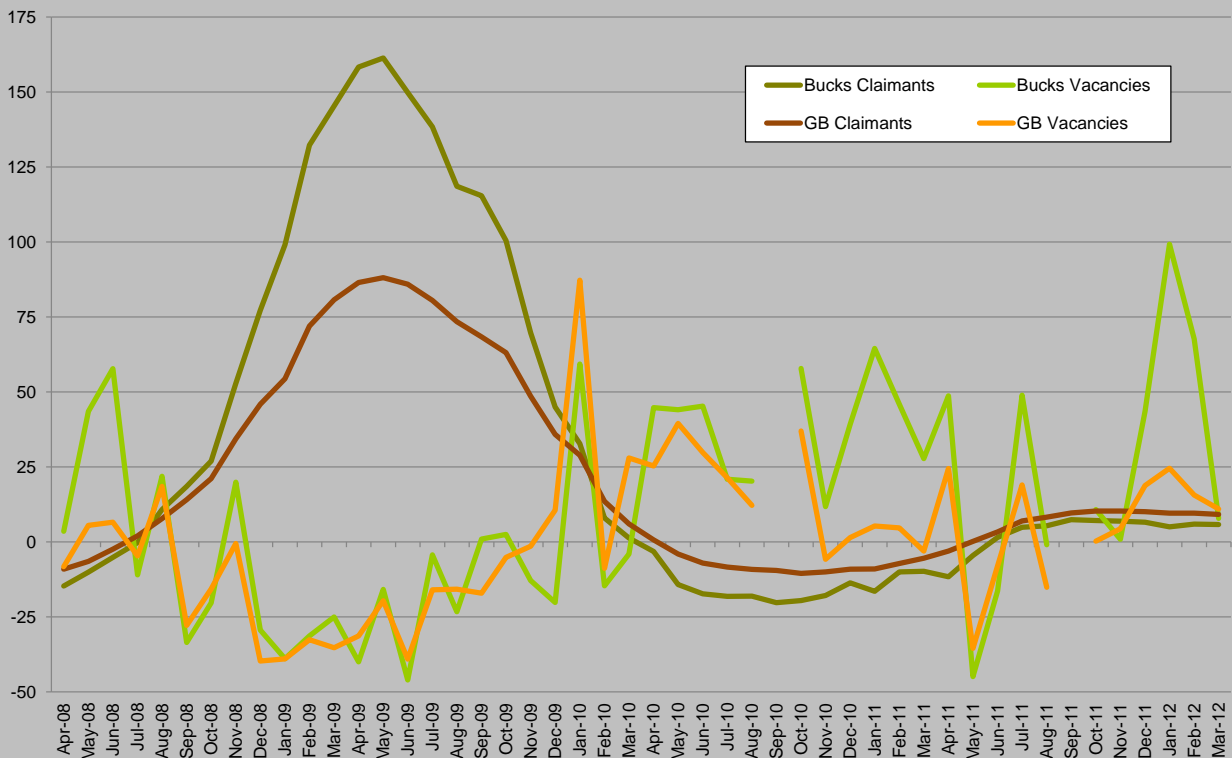
Claimants usually employed in managerial, professional and technical occupations now account for only 18 per cent of all claimants in Buckinghamshire. Within this group, the number of claimants usually employed in professional occupations has fallen to 250, while this is still over double the pre-recession level, it represents only 3.9 per cent of all claimants, the second lowest proportion since comparable records began in 2005. In contrast, residents usually employed in sales occupations now account for 24.4 per cent of all claimants, ranging from 19.7 per cent in South Bucks to 26.6 per cent in Wycombe (and 28.0 per cent in the Wycombe Parliamentary constituency). The number of claimants usually employed as sales and retail cashiers increased to a new high of 1,365 in March, over 1,000 above the level recorded before the recession in March 2008. The next most common usual occupations of claimants were general office assistants (555 claimants), other goods handling and storage occupations (435) and van drivers (225).

There are 108 wards in Buckinghamshire, 30.8 per cent of claimants (2,045) live in the ten wards with the highest claimant counts and 56.1 per cent live in top 25, while 18.3 per cent live in the 50 wards with the lowest claimant count. Ten Buckinghamshire wards have a claimant count rate above the national rate of 4.1 per cent, while 16 have less than one per cent of residents claiming Job Seekers' Allowance.

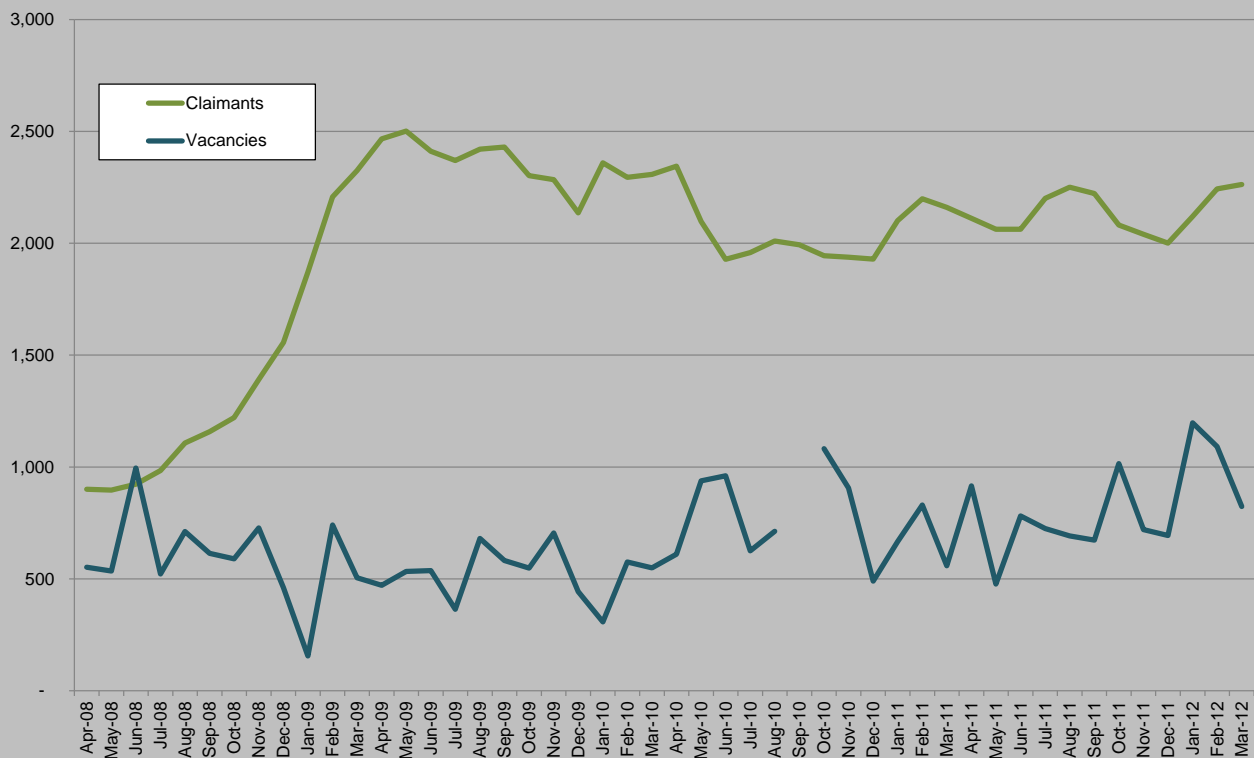
**Buckinghamshire Claimant Count and Vacancies, March 2012**



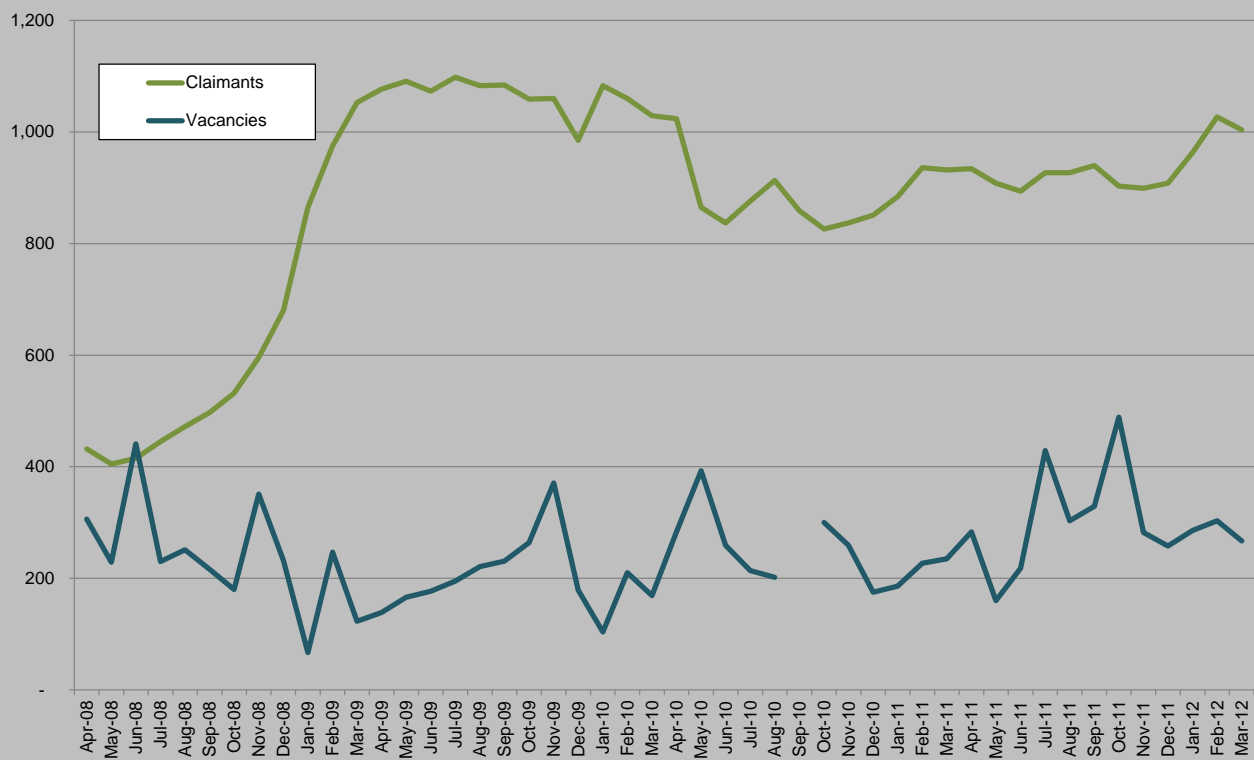
**Annual Change in Claimant Count and Vacancies (%)**



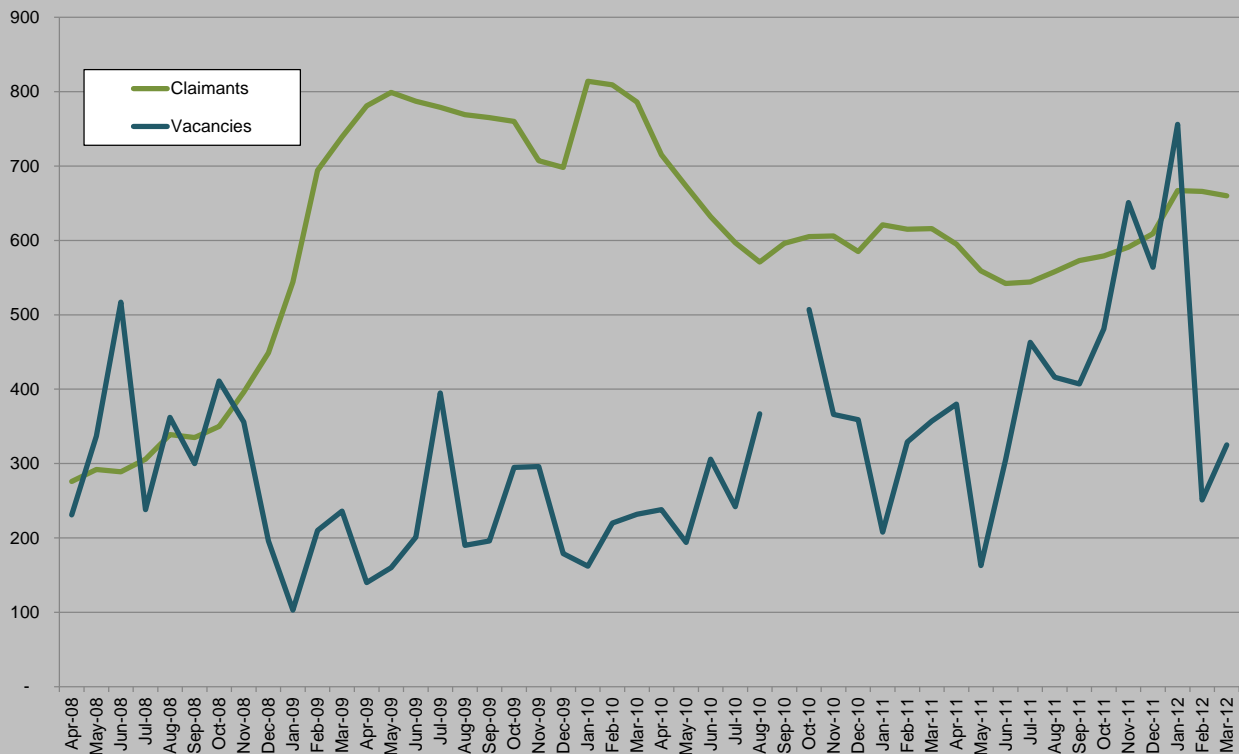
### Aylesbury Vale Claimant Count and Vacancies, March 2012



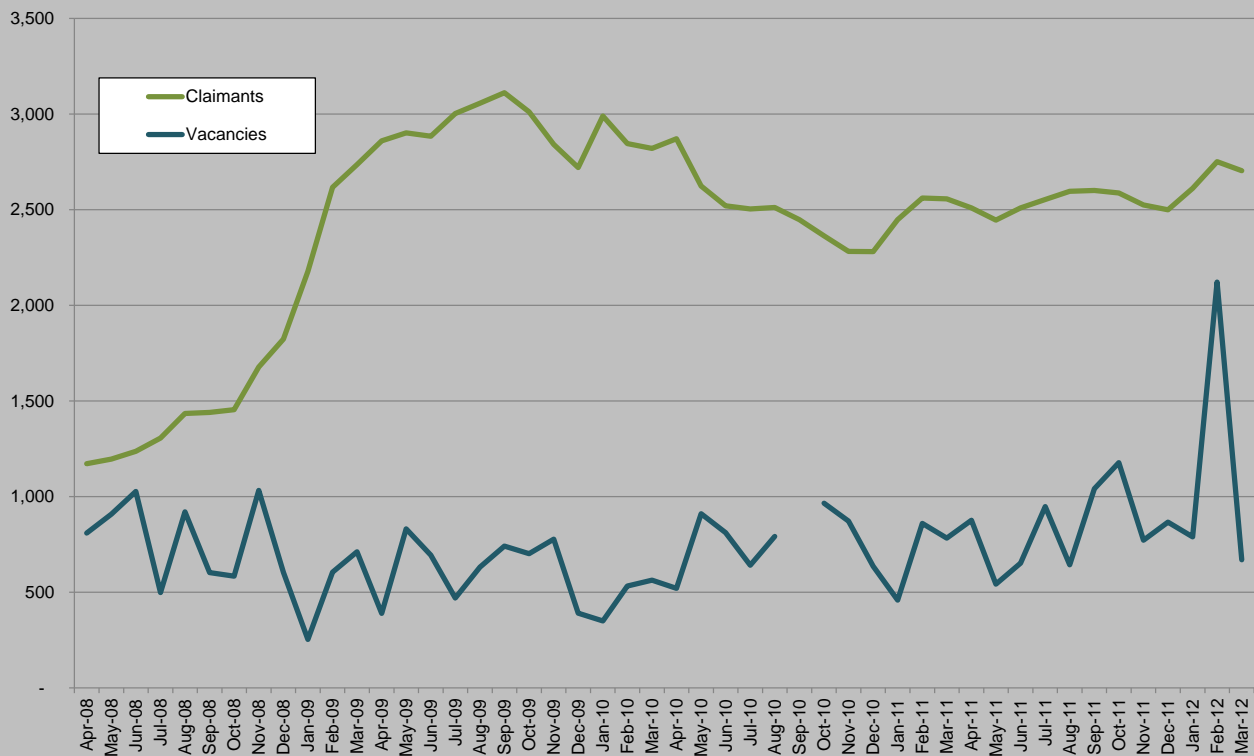
### Chiltern Claimant Count and Vacancies, March 2012



### South Bucks Claimant Count and Vacancies, March 2012



### Wycombe Claimant Count and Vacancies, March 2012



**Table 2: Vacancies Notified to Job Centres, March 2012**

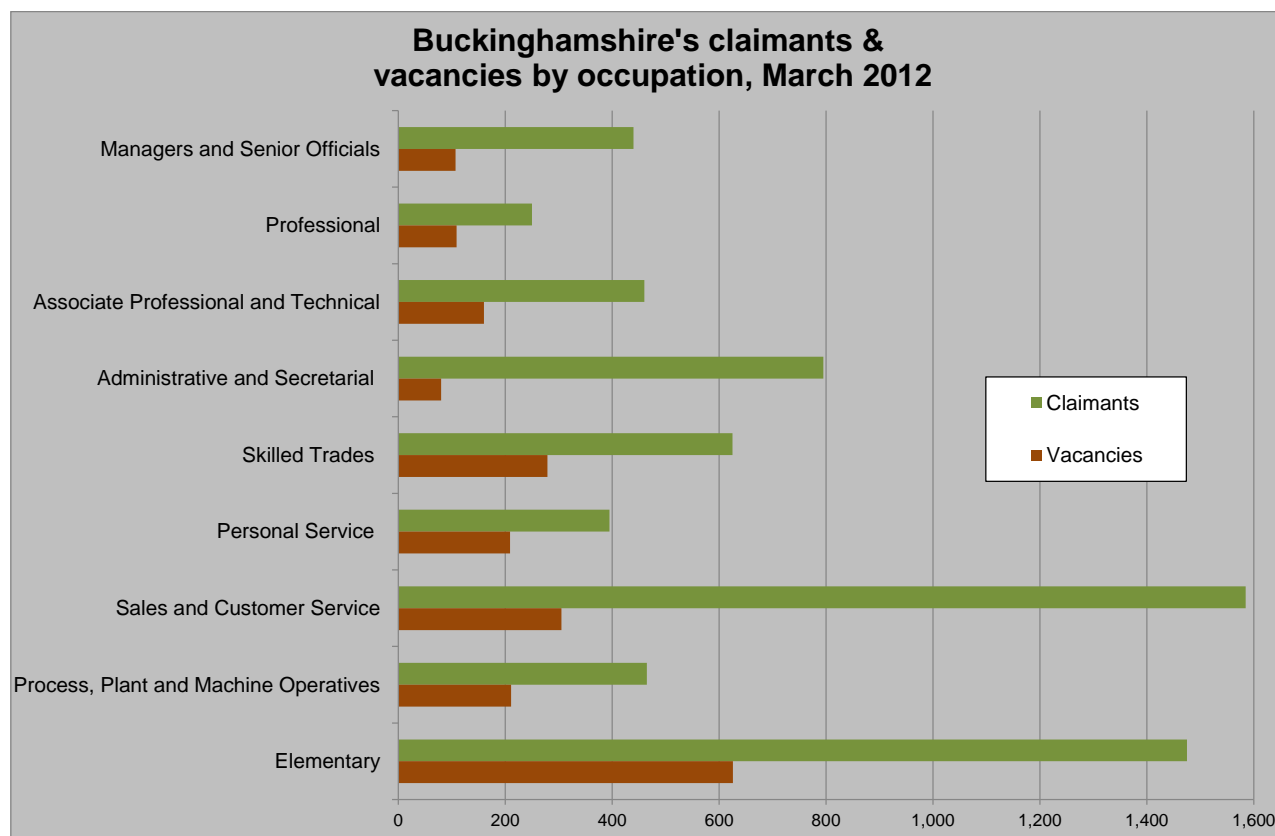
	Notified Vacancies	Annual Change	Vacancy Ratio, March 2011	Vacancy Ratio, March 2012
Aylesbury Vale	824	47.4	2.6	2.7
Chiltern	267	13.6	4.1	3.8
South Bucks	325	-9.0	1.9	2.0
Wycombe	670	-14.4	3.0	4.0
Buckinghamshire	2,086	7.9	2.8	3.2
South East	42,253	20.7	3.7	3.6
Great Britain	323,298	11.0	5.0	5.0

Source: Job Centre Plus, 2012

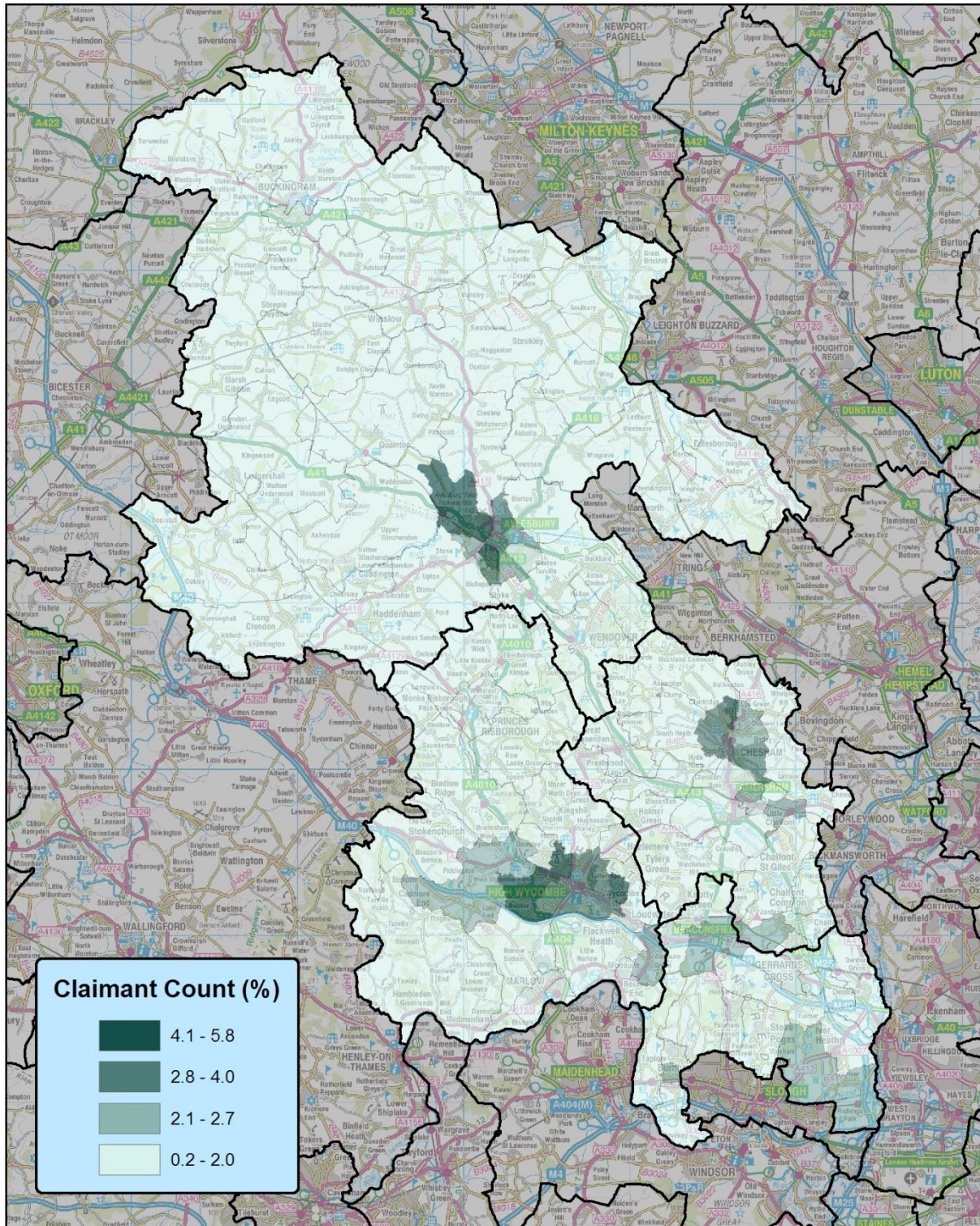
**Table 3: Claimants Usually Employed at SOC's 1-3, March 2012**

	SOCs 1-3	%	Rank
Aylesbury Vale	370	16.7	73
Chiltern	205	21.1	24
South Bucks	135	21.4	23
Wycombe	445	16.7	72
Buckinghamshire	1,165	18.0	3
South East	20,165	13.7	2
Great Britain	177,485	11.2	

Source: Job Centre Plus, 2012



Source: Job Centre Plus, 2012



**Buckinghamshire Claimant Count Rate by Ward  
March 2012**

This map is reproduced from Ordnance Survey material with the permission of Ordnance Survey on behalf of the controller of Her Majesty's Stationary Office. Crown Copyright. Unauthorised reproduction in this map is prohibited and may lead to prosecution or civil proceedings.  
© Copyright Buckinghamshire County Council Licence No. 100021529 2010  
Imagery © GeoPerspectives.com



Produced by BBF  
18 April 2012

Scale: 1:300,000 at A4  
0 1.5 3 6 9 12  
Kilometers

